



HERITAGE MATTERS

VOLUME 3

JUL-SEPT 2018

INSIDE THIS ISSUE:

- National Trust Welcomes Sugar Factory Announcement** 2
- Trust President Weighs in on Brazil's Museum Fire** 3
- "Panama Dreams" to Premiere in St. Kitts** 4
- Meet the Artist: "Loada"** 5
- Tick Tock! The Circus Clock is Ticking Again!** 6
- All Aboard! Great Turnout for Scenic Railway Tour** 7
- Governor General Presents Official Portrait to National Trust** 8
- Hospitality Students Journey Through History** 8
- From Our National Register of Heritage Places** 9
- Farewell and Good Luck!** 9
- Brimstone Hill's Emancipation Festival in Pictures** 10
- Announcements** 11
- Annual Heritage Appeal Continues** 12

New Exhibition Focuses on Trade and Banking



The St. Kitts Dollar (1913-1938)

The history of trade and money in St. Kitts is the focus of a new exhibition at the National Museum, opening on Tuesday October 23rd.

A joint initiative between the St. Christopher National Trust and the Eastern Caribbean Central Bank (ECCB), the History of Commerce and Banking Exhibition explores the marked shift in the island's economy following Emancipation.

Prior to Emancipation most trade in St. Kitts was conducted directly with England, with sugar being used as the main form of exchange. After 1834 however, the former enslaved people had to be paid wages in cash. This ushered in a money economy



The exhibition features trade -related artifacts and documents

which saw an increase in both the volume of imports and the number of retail businesses.

The new exhibition features trade -related artifacts and documents and a number of coin collections from The National Trust collection.

The Trust Collection is a collection of coins that were used in the territory before Emancipation and up to the turn of the century.



"Pieces of eight"

the Spanish Empire from around the turn of the 17th century. It continued to form an important portion of the circulating coinage in Europe, Asia and the Americas - including the British colonies - until the late 1870s .

The History of Commerce and Banking Exhibition will also feature collections of Eastern Caribbean currency before and after the formation of the Eastern Caribbean Currency Union.

The exhibition will also highlight some of the businesses that were founded in the 19th century, that are still in operation in some form today.



A.M. Losada, Bank Street

Businesses like Wade and Abbott which evolved into TDC Group of Companies and the Estates Agency Depot which became S.L. Horsford and Company Ltd.

The History of Commerce and Banking Exhibition opens to the public at the National Museum on Tuesday October 23rd and runs until Friday November 30th. Admission to the Exhibition is \$5.00.



Delisle Walwyn Liverpool Row

The National Museum is open Monday – Friday from 8:00 a.m. – 4:00 p.m. and Saturdays from 9:00 a.m. – 1:00 p.m.

National Trust Welcomes Sugar Factory Announcement



The St. Christopher National Trust welcomes the government's announcement that the old sugar factory should be recognized as a heritage site.

Minister of Agriculture and Lands The Hon. Eugene Hamilton, announced during the Prime Minister's press conference, that the government was moving to clean up the area and would engage with the National Trust about future plans for the site.

"We engaged the Heritage Society [National Trust] because like Brimstone Hill, like Spooner's Ginnery, it is a heritage site... The Heritage Society has given a view, and I know that they are actively working based on their communication with us, for recommendations to the government of what ought... to happen to that site," Minister Hamilton said.

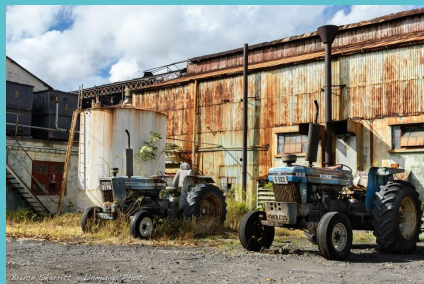


Photo courtesy Bruce Skerritt (2018)

The Minister said that the priority would be to have loose galvanize removed from the metal frames of the building, and he indicated that quotations for the cost of removal were before the Cabinet for

consideration.

Since the closure of the sugar factory in 2005, the St. Christopher Heritage Society (now the St. Christopher National Trust) has called for the preservation of the factory and advocated for the establishment of a sugar museum on the site. In the years since then other industrial businesses have come to occupy

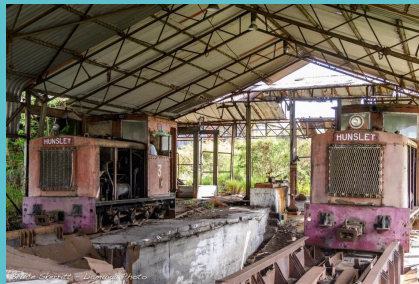


Photo courtesy Bruce Skerritt (2018)

sections within the compound.

The main factory building which still contains most of the equipment and a couple of the other structures have been abandoned. Despite much of the remaining equipment being exposed to time and the elements, they are still visually dramatic and retain much of the atmosphere of the era when Sugar was King.

Minister Hamilton spoke about the government's ongoing communication with the National Trust about site.

"Influenced by the Heritage Society and hopefully by members of the community who have an interest, the government will respond in a way that will ensure that what is done there will be pleasing to the majority of persons in St. Kitts and Nevis."

National Trust Executive Director Ryllis Percival was pleased to learn that the Minister had acknowledged the historic importance of the site.

"We were thrilled, and truthfully somewhat relieved, to hear that the government seems committed to preserving what remains of the factory," she said.

Executive Director Percival, Trust President Schneidman Warner and members of the Trust's Building and Sites Committee visited the old factory compound to assess the condition of the buildings and remaining equipment.

The organization has renewed its lobbying of the government to preserve what remains of the factory works. It is proposing that they be developed into a museum with an interpretation area, visitor center and gift shop.



SCNT Exec. Director
Ryllis Percival

"We are excited that we have finally been able to convince our Government that this site is a heritage site and should be protected and preserved. The Trust has actively advocated for the Sugar Museum and we are proud that we are one step closer to making it a reality" Ms. Percival said.

"The Sugar Factory represents an era of our history that needs to be preserved for future generations; but not just for future generations, but in memory of all of those who worked in the industry. This site will not just be a museum, it will be a memorial," she stated.

Trust President Weighs in on Brazil's Devastating Museum Fire

"The first thing that came across one's mind when one became aware of this tragedy, was to visualize one's self standing in the Circus looking south on Fort Street and seeing a similar event, the immediate thought was, 'How would one feel?'" Those were the words of National Trust President Schneidman Warner, speaking in the wake of the recent fire that tore through Brazil's 200-year old National Museum, destroying much of its archive of 20 million items.

"One of the challenges at museums is that often they are not custom designed buildings. A custom designed museum would have fire proof segments in the building. It would be like a ship where you can shut off one side of the building from the next and so at night for security and safety purposes the fire doors would close off the building so that if a fire broke out it would be contained in that section of the building," Mr. Warner explained, speaking on the National Trust-hosted "Heritage Voices" on WINN FM on September 4th (2018).



SCNT President Schneidman Warner

"Not just in St. Kitts but in much of the rest of the world, museums are often converted older buildings and so the spaces in the ceilings where fire can move presents a challenge with regards to fire containment."

Rio de Janeiro's National Museum, housed in a former colonial slave traders' home that was later turned into a royal palace, was one of the oldest and most important historical and scientific museums in Latin America. It was gutted by an overnight blaze on September 2nd which destroyed 90% of its artifacts, some dating back more than 3500 years.

The St. Kitts National Museum is housed in the historic Old Treasury Building. Construction began on the structure in 1894.

"The problem with outfitting is that it is

often more expensive than original construction...It is a lot easier to convert an existing building [like] some stately home or some old plantation house because it fits the image of a museum. But built in to that are the challenges that are faced with regards to security and safety in the event of fires"

It was pointed out that one of the greatest potential problems for older buildings, is that of safety.

"No matter how well designed the building, whether it was built 100 years ago or 10 years ago, if maintenance is not done regularly and fully, all of the challenges will manifest themselves. So if the door is designed to close securely at night but the hinges are warped and no one has changed the hinges and so that crack is left in the door, it doesn't seal properly, it means the fire will spread more quickly than before. In terms of flooding if someone decides, well we can't afford to repair the roof but will make sure the doors are secured so that no one can break in and steal the stuff, what would happen is the rain will come in and 'steal the stuff' instead. So those are some of the challenges that museum management face."

Therefore the priority has to be the maintenance of the building ahead of the preservation of the collections. Structural repairs are a top priority for the Trust, the President indicated.

Funding remains a challenge though, for most museums. In Brazil, the National Museum's directors have accused the federal government of years of insufficient funding while the Brazilian government has accused Rio's Federal University - which manages the museum - of failing to pass on money to the museum.

"With all the demands that exist on society for health, security, education and all these other things it is often difficult to ask [government] or expect ministers of finance to allocate money to do what most people think of as 'putting up old stuff.' When there are challenges faced,

providing chalk for the schools, gasoline for the police cars or tires for the fire engines, the average person would ask that the priority would be placed on those things rather than on the preservation of history."

"It often comes down to the priority of the society," Mr. Warner opined.

While St. Kitts' National Museum houses a number of historically significant artifacts, it's Documentation Centre contains many one of a kind documents and original photographs.



Fire gutted Brazil's National Museum on September 2, 2018

"No money no budget from the government could replace what [is] stored there, it is making sure it is safe and making sure it is cared for."

Mr. Warner says that with many items being irreplaceable, the priority has to be put on preventing their damage or destruction.

"Insurance can only go to a certain point but if for example you have an original copy of the signed articles of the independence of St. Kitts [and Nevis], even if they were insured for fifty million dollars and they were lost or destroyed, fifty one million dollars can't replace it. So both insurance companies and museum managers need to say, 'We need to spend more money on avoiding the catastrophes than remedying them. It is not a matter of buying a new 'whatever' to put back in its place, but rather avoiding replacing it in the first place,' he stated.

“Panama Dreams” to Premiere in St. Kitts



The acclaimed docudrama "Panama Dreams" by Barbadian filmmaker Alison Saunders, will premiere in St. Kitts at a special event at the ECCB Auditorium on November 16th.

"Panama Dreams" features gripping re-enactments of Prince Collymore, a relative of Saunders who left Barbados in 1907 to work on the construction of the Panama Canal,

one of the Seven Wonders of the Industrial World. It also includes interviews with Panamanians of Barbadian descent as well as persons living in Cuba whose relatives would have migrated there from throughout the Caribbean.

In "Panama Dreams" Saunders explores her family history and examine the great Caribbean migration that transformed global commerce. The film follows her personal journey that began in 2011 in search of descendants of Prince Collymore. The compelling scenes feature archival film footage and photographs as well as contemporary images and interviews that reveal a larger story of strength, endurance and sacrifice of the early Caribbean migrants and their descendants in Panama, Cuba, and the United States.

Saunders has described the process of producing the film as 'a journey of discovery.'

"We had this idea of finding the ancestors but when I got into the Panama society it took me a while to really understand the issues that our people faced over there," she said.

The "Panama Dreams" Premiere and cocktail is being hosted by the Eastern Caribbean Central Bank as a fundraiser for the St. Christopher National Trust. Tickets are EC\$75.00 and are available at the National Trust offices.



A scene from "Panama Dreams"



Alison Saunders

About the Panama Canal

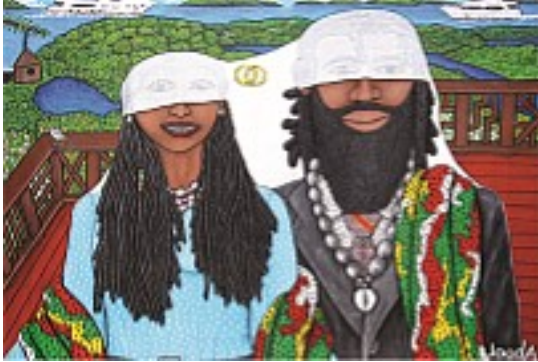


West Indian "Powder Men" carried 50 lb boxes of dynamite on their heads

The Panama Canal is an artificial 82 km waterway in Panama that connects the Atlantic Ocean with the Pacific Ocean. The canal cuts across the Isthmus of Panama and is a conduit for maritime trade.

Construction began on the canal in 1881 but stopped due to engineering problems and a high worker mortality rate. The United States took over the project in 1904 and opened the canal on August 15, 1914. Close to 25, 000 from across the Caribbean are estimated to have journeyed to Panama to work on the project. Crews of West Indians used to carry 50lb boxes of dynamite on their heads, were known as "Powder Men."

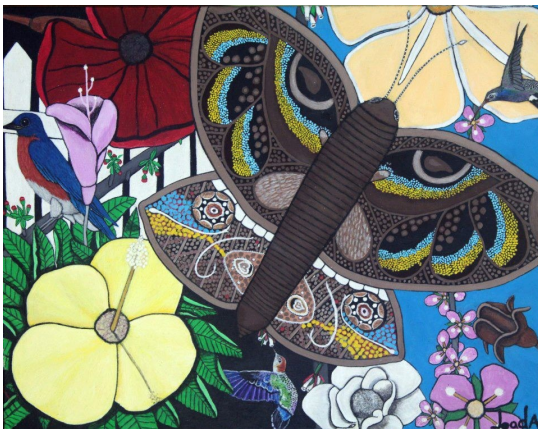
Meet the Artists: "Loada"



Wedding Couple

The Heritage Matters 'Meet the Artists' column showcases local creators, artists, crafts persons, writers, photographers and anyone creating work inspired by St. Kitts and Nevis.

Jesse "Loada" Versailles was born and raised in Sandy Point on St. Kitts' north-west coast, where he still resides.



Butterfly Garden

Loada has painted professionally for over 15 years. He recalls that even as a child, he always had a pen or pencil in hand. The energy of his brightly-coloured and other fantastical works, jumps off the canvas at the viewer. At the National Museum's recent "How Music Feels" Art Exhibit, his work pieces were described by patrons by such adjectives as "thought provoking," "powerful" and "joyous."

A prolific painter who operates under the banner of "Kittitian Art," Loada describes himself as a humble, creative artist who takes pride in promoting his country's culture.

Prints of Loada's work are available in various sizes for purchase in the National Museum Gift Shop, and he generously donates fifty percent of sales to the National Trust.

AGM 2018

The St. Christopher National Trust is preparing to host its Annual General Meeting in the coming weeks and is reminding members that they must be up-to-date on their membership subscription in order to participate in elections.

In addition, any member wishing to be considered for a position on the Board is most welcome and is encouraged to do so by contacting the Executive Director at 465-5584 or by emailing schs@sisterisles.kn to make an application.

Tick Tock! The Circus Clock is Ticking Again!

It took nearly two years and a lot of painstaking work to turn the hands of time, but turn they did. Basseterre's iconic Circus clock is ticking again!

The four faces of the clock on each side of the Berkeley Memorial in downtown Basseterre, had long stopped telling time. The clock could only work for a few minutes before its internal mechanism would stick and its hands would stop. Retired businessmen Jacques Cramer and Colin Mallalieu were determined to get it running again.



Anchor escapement

Tannis Layman, an American who has made St. Kitts her home, tells the National Trust that about two years ago Jacques Kramer solicited help from her engineer husband JB Layman. Examining the clock's inner workings, Mr. Layman quickly identified that the problem was its escapement gear.

The escapement gear is a mechanical device that regulates the swing of a pendulum or the relaxing of a spring. The movement is so accurate, that time can be measured with it. Each swing of the pendulum or balance wheel releases a tooth of the escapement's wheel gear, allowing it to advance or "escape" by a fixed amount. This regular periodic advancement moves the clock's hands forward at a steady rate.

Time and the elements however, had taken their toll on the "Circus Clock." The teeth of the gear were crooked and worn. According to Mrs. Layman, once the cause of the problem had been identified, the next step was to replace the escapement gear. But how does one replace a part on a 130 year old time piece? The Laymans determined that a new one would have to be made from scratch.

They engaged Ameri-clock, a Missouri-based company that specialized in design

and manufacturing of large custom clocks. Mr. Layman provided specifications but ultimately it was determined that the manufacturers would need to examine the gear.

"I put it in my handbag and took it to the States," Mrs. Layman said, explaining that the escapement gear is not much more than six or seven inches in diameter.

She said she has no problem travelling with the innards of a clock in her handbag. Indeed, authorities along the way were intrigued by the story of the 'Circus Clock,' she told the Trust.

It took close to a year to get the new gear manufactured and back on the island. It was installed, the clock was wound and the hands started moving. The clock worked! For about two hours. Then it stopped again.



Escapement gear

"It was depressing," Mrs. Layman admits.

But JB Layman was not daunted for long. By that time, Jacques Cramer had passed away (March 2018) and Mr. Layman was more determined than ever to see his friend's dream realized. He was convinced that the problem was that the gear's teeth were not catching properly, so he decided he would fine-tune it manually. Layman spent weeks filing and shaping, and taking measurements and re-shaping, taking more measurement and making more adjustments. In September, he was sure it was ready.



**Standing: JB Layman
Sitting: Jacques Cramer (left)
& Colin Mallalieu**

The gear was installed, the clock was wound, and it started ticking. The Laymans hung around the area for a couple of hours. The next day, it was still working, and the next, and...after four days, they decided they could exhale. They had done it!

It was a bittersweet celebration though, because the person who had drawn them to the project, was not there to be part of it. Mrs. Layman says that they have continued to have the support of Colin Mallalieu, who has been with them every step of the way.

The couple, who paid for the restoration out of their own pockets have declined to say how much the venture has cost, but they remain committed to its ongoing care.

"I wind the clock every week," Mrs. Layman says.

When she has to travel she makes arrangements for someone to wind it while she's away. They have now started a project, writing a series of articles about the Circus Clock, "The Berkeley Memorial Clock - Moments in Time." It is dedicated to the memory of Jacques Cramer.

About the Berkeley Memorial (The Circus Clock)

The Berkeley Memorial stands in the centre of Basseterre, in an area referred to as the 'Circus,' believed to be a reference to London's Piccadilly Circus. The well-known landmark was built in 1883 in honour of Thomas Berkeley. Born in St. Kitts in 1824, Berkeley was a planter, a legislator and President of the General Legislative Council of the Leeward Islands Federation. He was recognized for demonstrating concern for the welfare of the island's people and for his contributions to its improvement.

All Aboard! Great Turnout for 7th Annual Scenic Railway Tour

Over 200 members and supporters joined the National Trust on its Annual 'Journey Back in Time Scenic Railway Tour.' The tour was hosted on the Heroes Day public holiday, this year celebrated on September 17th.

Passengers enjoyed the island's breathtaking vistas while a Scenic Railway guide, narrated the story of the island's sugar history, pointing out estates and interesting landmarks along the way. This year, travelers journeyed to the train's Sandy Point station and back. En route back to town, they participated in a lively history quiz that saw a number of passengers winning exciting prizes including National Trust branded items and gifts donated by Shoreline Plaza and Dufrey's.

The "Sugar Train" traverses the route used for over 90 years by the St. Kitts sugar industry. From 1912 until the closure of the industry in 2005, sugar cane was transported along railway lines in open carts pulled by a locomotive engine, from the many estates around the island to the central sugar factory at Needsmust.

The St. Kitts Scenic Railway began operating a scenic tour in 2002, using specially-out-fitted train cars to carry passengers around the island. They are treated to views of St. Kitts' dramatic landscape from a perspective not visible when travelling by road. They shared the tracks with the St. Kitts Sugar Manufacturing Corporation, taking over the maintenance of the rails when the SSMC ceased operations.

For the past seven years, the St. Kitts Scenic Railway has graciously provided to the National Trust, its train and staff for the fundraising event. The St. Christopher National Trust remains ever grateful to the Scenic Railway for their continued support of what has become not only the organization's biggest fundraiser but also one of its most popular events.



Governor General Presents Official Portrait to National Trust

National Trust Patron the Governor General Sir S.W. Tapley Seaton GCMG, CVO, QC, JP has presented a framed portrait of himself to the Trust. His Excellency made the formal presentation this past Emancipation Day (August 1st) before members of the media, at the launch of the Museum's Cleghorn Journal's Exhibit.

Soon after The St. Christopher Heritage Society was established, Sir Tapley, then Attorney General of the state, was named the first government nominee to the organization's Board.

He served for a number of years until he demitted office in 1995. He was later elected in his own right as a Member of the Board and crafted The National Trust Bill along with historian and former Brimstone Hill Society General Manager Mr. Larry Armony

As the sitting President when the Heritage Society became the St. Christopher National Trust, Sir Tapley thereby became the last President of the SCHS and the first President of The National Trust.

His Excellency continues to be involved in discussions concerning the revision of The National Environmental and Conservation Act of 1987, NCEPA, which was drafted under his watch as Attorney General. He has provided advice and support on the proposed National Conservation and Environment Management Bill (NCEMB) but is particularly concerned about the implementation of listing for historic buildings.



His Excellency the Governor General Sir S.W. Tapley Seaton GCMG, CVO, QC, JP presents a framed portrait of himself to National Trust E.D. Ryllis Percival

As Patron of the National Trust he has thrown his full support behind its initiatives, and regularly advocates on the organization's behalf.

"We have several projects going on and I will not relent my efforts in terms of making sure they come to fruition," Sir Tapley said at the exhibit's opening.

The recently presented portrait is on display in the National Trust offices alongside one of the Prime Minister Dr. The Honourable Timothy Harris.

Hospitality Students Journey Through History at National Museum



To know the history of St. Kitts is to grasp the uniqueness of its beauty and be able to represent and showcase the island in its full bloom. Embracing this, Instructor Diana Louard brought her CFBC 'Leisure and Recreation' class to visit the National Museum to piece together the story of how culture meets history.

During their recent visit to the museum, they embarked on a journey through time from the earliest documented peoples, to the arrival of the European colonists and the dark recesses of the slave trade and slavery. They traced the rise and fall of 'King Sugar' and discovered the jewels left behind. From the building of our economy to natural herbal medicines still used today, the students left with their

hearts filled and their minds open to all things St. Kitts.

"Extremely informative, so much knowledge given to the students. Kudos to the administrators of the museum and a job well done." – Ms. Diana Louard, CFBC Hospitality Instructor.

From Our National Register of Heritage Places

THE OLD BOYS SCHOOL

The Companion School for Boys was built in St. Kitts in 1872 on land given to the Methodist Church by the Government. The Methodist Church itself was spared in the Great Fire of Basseterre in 1867, but its school room was destroyed by the blaze that razed the capital from West Independence Square Street to the Cunningham Hospital at Burdon Street and from Cayon Street to the Bay front.

Located on the corner of Seaton Street and Victoria Road, the property became home to the Boys School. In 1915 it was taken over by the government and renamed the Basseterre Boys' School.

The building continued to house the school until 1991, when pupils were transferred to the new co-educational Beach Allen Primary School along with students from the nearby Girl's School, run by the Anglican Church.

Shortly afterwards the buildings were given back to the churches and today the 'Old Boys School' now serves as a church hall and is used to host bazaars and other functions.



Farewell and Good Luck!

At the end of the summer the National Trust bid farewell to Office Manager Tassaney Steinbergen who had been with the organization about a year and a half.

Highly-efficient and self-motivated, Tassaney interned at the Trust as the Assistant to the Executive Director while completing her final year at the CFB College, where she majored in Accounting.

In 2015 Tassaney received the best results in St. Kitts in the CXC-Caribbean Secondary Education Certificate (CSEC) Examinations. A student at the Verchilds High School, she offered 15 subjects and attained 13 Grade One passes and two Grade Two passes. She was at the time her school's netball captain and the Vice Captain of the St. Kitts National Under-16 Team.

Tassaney held the the position of Goal Keeper on the Verchilds High School Female Football team and during her time in High School participated in a number of track events including the TDC Interschool meet, at which she medaled. She also found time to be a member of the Girls Bridgade and serve in the Ebenezer Methodist Youth Choir.

Working part time at the Trust and playing netball for the National Team, Tassaney achieved outstanding CAPE results. She was earned 7 Grade One passes and a Grade Two, and was named Second Runner Up for State Scholar.

After completing her studies she took up a full-time position at the Trust as Office Manager. She had planned to take

some time off before going overseas to University, but by summer's end had decided that she was ready after all to continue her education.

In August she headed to Jamaica where she is now studying Accounting and Economics at the University of the West Indies (Mona).

"Working at the Trust was undoubtedly one the most fruitful periods in my life thus far," Tassaney says.

"I am truly appreciative of the opportunity to grow not only as an intern but as an individual. Immense gratitude goes out especially to the Executive Director and President for their unwavering support and assistance as well as the directors and staff, both past and present, for welcoming me so graciously. I'll continue to wish the best for the Trust and will always dedicate a portion of my time towards its work."



Tassaney Steinbergen

Brimstone Hill's Emancipation Festival in Pictures

"Art, Freedom, Creativity; Shaping Society"

Sunday 19th August, 2018



Emcee Dawn Mills



Ras Sankofa and House of Judah Musical Foundation



The Citadel



Nigel "Numpy" Williams



Ras Jungles



Charles E. Mills Secondary School Choir



Ali I



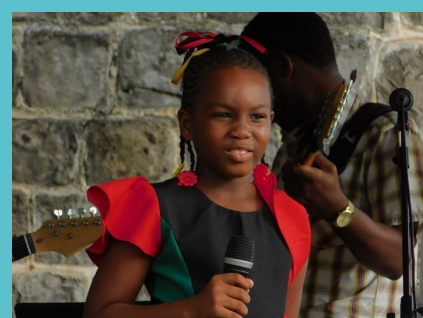
Colleen Duncan and D'Awesome Navigator



L.E.A.P. Dancers



COGOP Dancers



Solisha Powell



Mansion Bull company from Sandy Point




HISTORY OF COMMERCE & BANKING EXHIBITION

October 23, 2018 - November 30, 2018
NATIONAL MUSEUM

Bay Road, Basseterre
Tel: 465-5584

A joint initiative by the
St. Christopher National Trust & Eastern Caribbean Central Bank

Opening Hours:

Mon - Fri 8am - 4pm
Sat. 9am - 1pm




St.Christopher National Trust & Museum
 SKNational Trust
 SCNational Trust



The National Museum and Gift Shop are open
8:00 a.m. – 4:00 p.m. Monday to Friday
9:00 a.m. – 1:00 p.m. Saturdays

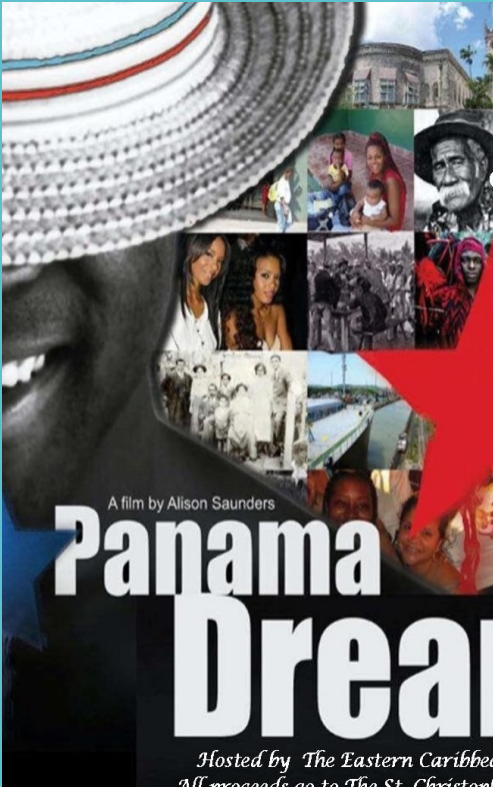
Admission to the Museum for non-member
residents/nationals is EC\$5.00
And for visitors US\$5.00

The National Trust Office and
Documentation Centre are open
9:00 a.m. - 5:00 p.m. Monday - Friday

The St. Christopher National Trust
is ever grateful to those who have supported
our events and made donations to the Trust
and Museum over the past few months

Thank you for partnering with us:

Vaughn Anslyn
Caribelle Batik/Maurice Widdowson
Carib Brewery
Cuthbert Crossley
Dufry St. Kitts
Harper's Office Depot
Shannon Hawley
Tom Jones
Koscab St. Kitts Nevis
Joan Mallalieu
National Archives
OOJJ's
Public Works Department
Rams Trading
Shoreline Plaza
St. Kitts and Nevis Defence Force
St. Kitts Department of Culture
St. Kitts Scenic Railway
Valu Mart




St. Kitts Premiere

EC\$75.00 Admission
includes cocktail reception

A Caribbean Journey

Friday, November 16, 2018
Sir Cecil Jacobs Auditorium



Panama Dreams

A film by Alison Saunders

Hosted by The Eastern Caribbean Central Bank
All proceeds go to The St. Christopher National Trust

TICKETS AVAILABLE AT
THE ST. CHRISTOPHER NATIONAL TRUST
Mon - Fri 9:00 a.m. - 5:00 p.m.

Annual Heritage Appeal Continues Our 2018 Goal is \$300,000

The St. Christopher National Trust launched its Annual Heritage Fundraising Appeal earlier this year as a means of raising much-needed funds towards the work of the organization. We have fallen below our \$300,000 target, only raising \$35,000 to date.

With your generous contribution to our Appeal, you will make it possible for the Trust to achieve its Mission which is **“To preserve and promote the natural, cultural and historical landscape of St. Kitts and to build interest and stimulate minds through the development and preservation of our heritage while educating our people to transform communities.”**

Your donation will allow the Trust to function at its optimal level. It will also ensure that the organization continues to protect, preserve and restore many of our built heritage and monuments to their original beauty while creating opportunities for re-use of the spaces that would bring economic benefits to our citizens and residents.

When you partner with the St. Christopher National Trust you will not only be contributing to the work of the Trust, but you will also be investing in the future of St. Kitts by enhancing our tourism product to be more focused on our history and heritage.

**Our success depends on YOU!
Your gift can change the future**

Yes! I want to contribute to the St. Christopher National Trust Annual Heritage Fundraising Appeal.
My contribution is shown below.

_____ \$250 _____ \$500 _____ \$1000 _____ \$1500 _____ \$2,500 _____ \$5,000 _____ \$10,000

Name: _____

Address: _____

Email: _____

Phone: _____

PLEASE DETACH THIS FORM AND RETURN IT WITH YOUR GIFT TO
St. Christopher National Trust, P O Box 888, Bay Road, Basseterre, St. Kitts
Or Call: (869) 465-5584/662-5548 Email: admin@stchristophernationaltrust.kn



ST. CHRISTOPHER NATIONAL TRUST

P. O. Box 888, Bay Road, Basseterre, St. Kitts

Tel/Fax (869) 465-5584

admin@stchristophernationaltrust.kn

<http://www.stchristophernationaltrust.kn>



[stchristophernationaltrustandmuseum](https://www.facebook.com/stchristophernationaltrustandmuseum)



[scnationaltrust](https://twitter.com/scnationaltrust)



[sknationaltrust](https://www.instagram.com/sknationaltrust)